



This material is part of the collection of the
Philadelphia Water Department

and was downloaded from the website

www.phillyh2o.org

Please contact the PhillyH2O webmaster
for more information about this material.

!!RC-R_Schuylkill_README.txt

Originals are positive blueprint copies - blue ink on white to yellowing background.
Tif scans made at 400 dpi, uncompressed tif setting, saves files as bitmap.

AEL 1-24-2013

Original maps from the Philadelphia Department of Streets, City Plans Unit.

The maps - numbered RC-R_Schuylkill_01 to RC-R_Schuylkill_18, may also be in a spreadsheet (along with thousands of other plans) at this link on the Philadelphia Geohistory web site:

<http://www.philageohistory.org/rdic-images/Streets/>

Schuylkill River. Wissahickon Creek, Phila., Pa. to Norristown, Pa. Surveyed by J. W. Thompson, Junior Engineer, Aug. to Dec. 1913. L. D. Shuman, Assistant Engineer. In 18 sheets. [Includes Index map (Sheet 14), descriptions of triangulation stations (Sheets 15, 16 and 17) and Freshet Data (Sheet 18) listing all the major floods affecting this section of the river to 1913.]

Thompson, J. W.; Shuman, L. D.

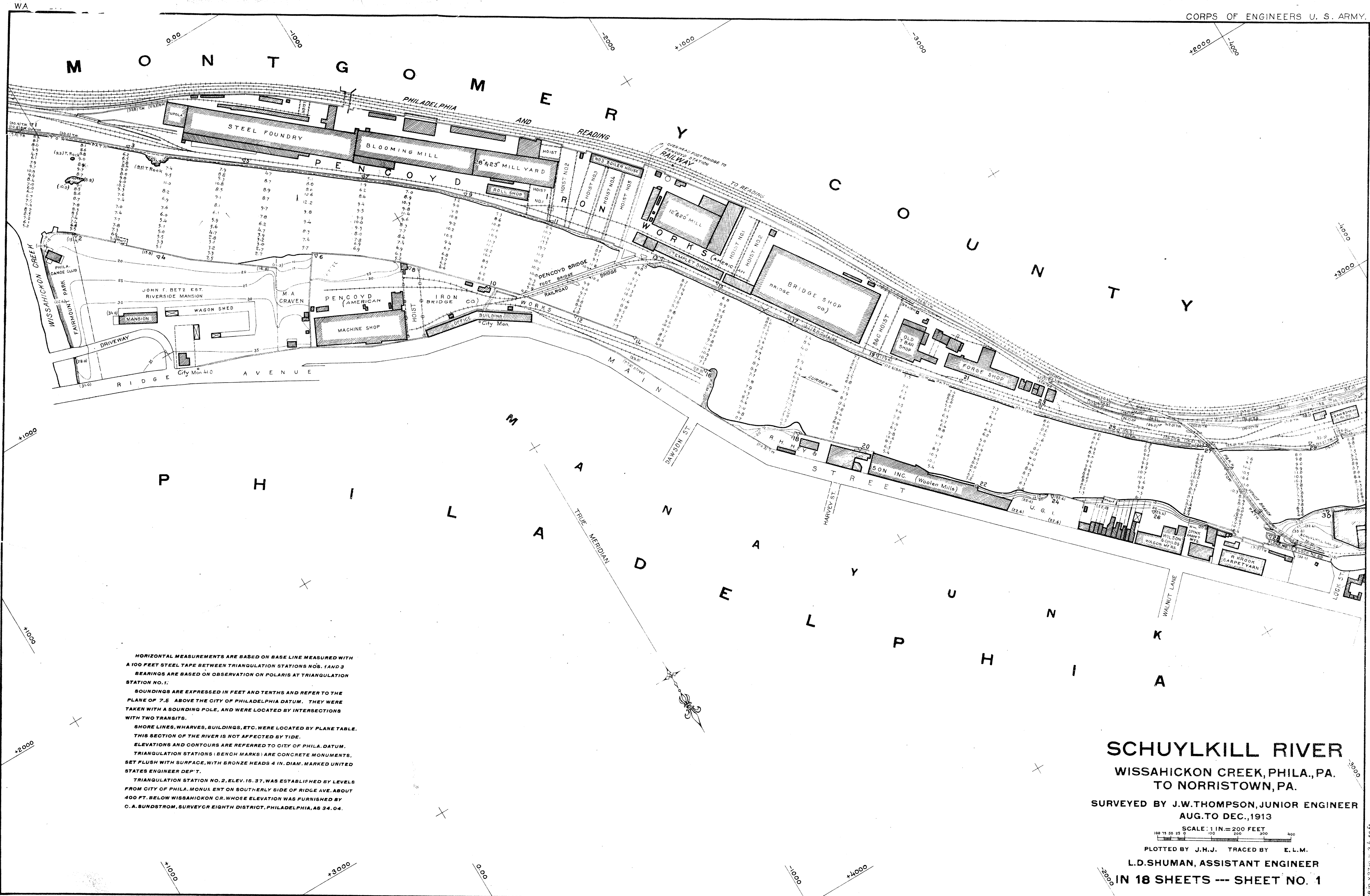
1913

Blueprint

18 x 27 in.

1 inch = 200 feet

Topography of shoreline, soundings, footprints of riverfront buildings, railroads, canal, locks, dams, tributary streams, and many other details.



HORIZONTAL MEASUREMENTS ARE BASED ON BASE LINE MEASURED WITH A 100 FEET STEEL TAPE BETWEEN TRIANGULATION NOS. 1 AND 3 BEARINGS ARE BASED ON OBSERVATION ON POLARIS AT TRIANGULATION STATION NO. 1.

SOUNDINGS ARE EXPRESSED IN FEET AND TENTHS AND REFER TO THE PLANE OF 7.5 ABOVE THE CITY OF PHILADELPHIA DATUM. THEY WERE TAKEN WITH A SOUNDING POLE, AND WERE LOCATED BY INTERSECTIONS WITH TWO TRANSITS.

SHORE LINES, WHARVES, BUILDINGS, ETC. WERE LOCATED BY PLANE TABLE. THIS SECTION OF THE RIVER IS NOT AFFECTED BY TIDE.

ELEVATIONS AND CONTOURS ARE REFERRED TO CITY OF PHILA. DATUM. TRIANGULATION STATIONS (BENCH MARKS) ARE CONCRETE MONUMENTS, SET FLUSH WITH SURFACE, WITH BRONZE HEADS 4 IN. DIAM. MARKED UNITED STATES ENGINEER DEPT.

TRIANGULATION STATION NO. 2, ELEV. 15.37, WAS ESTABLISHED BY LEVELS FROM CITY OF PHILA. MONUMENT ON SOUTHERLY SIDE OF RIDGE AVE. ABOUT 400 FT. BELOW WISSAHICKON CR. WHOSE ELEVATION WAS FURNISHED BY C. A. SUNDSTROM, SURVEYOR EIGHTH DISTRICT, PHILADELPHIA, AS 34.04.

SCHUYLKILL RIVER

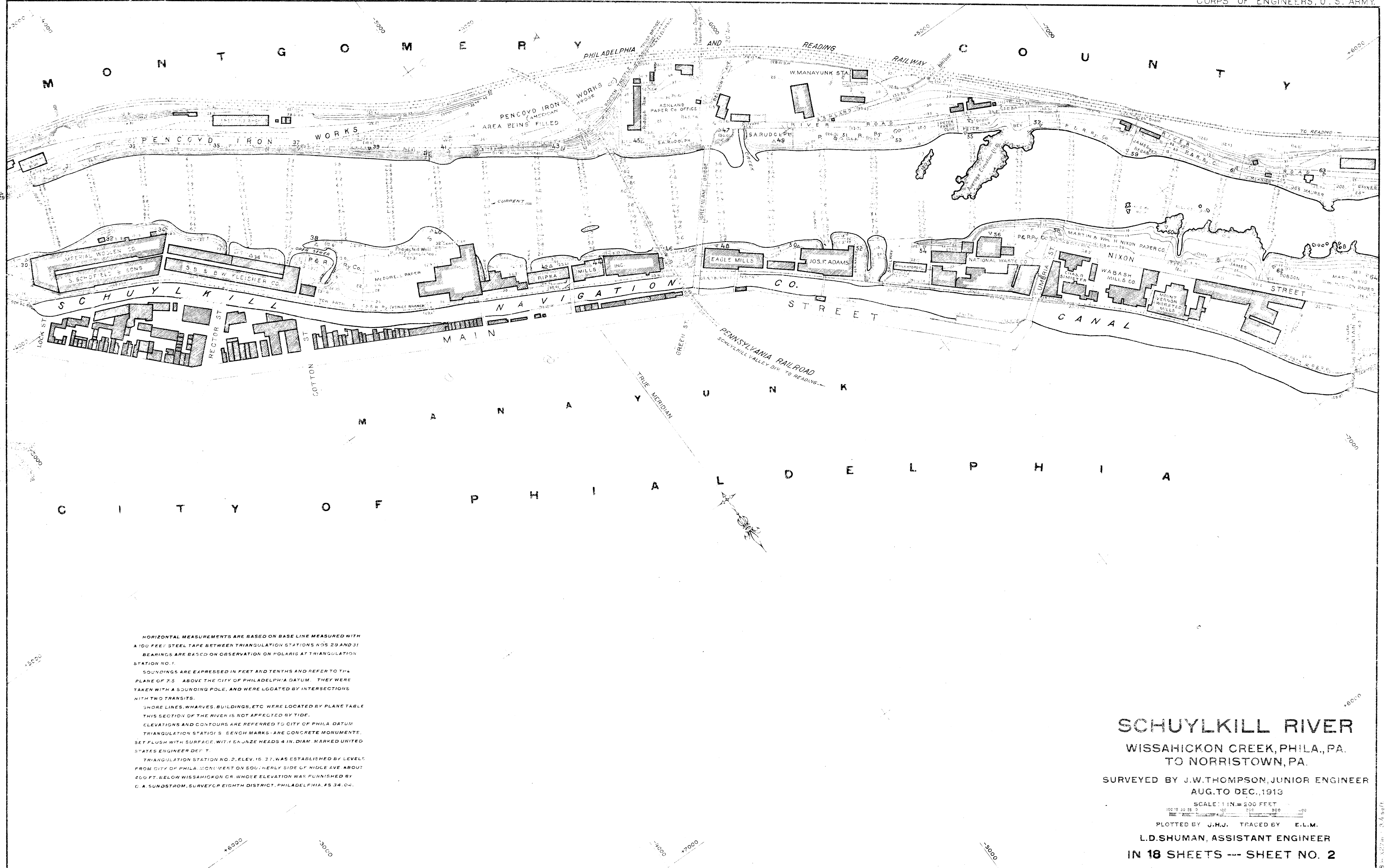
WISSAHICKON CREEK, PHILA., PA.
TO NORRISTOWN, PA.

SURVEYED BY J.W. THOMPSON, JUNIOR ENGINEER
AUG. TO DEC., 1913

SCALE: 1 IN. = 200 FEET

PLOTTED BY J.H.J. TRACED BY E.L.M.

L.D. SHUMAN, ASSISTANT ENGINEER
IN 18 SHEETS --- SHEET NO. 1



HORIZONTAL MEASUREMENTS ARE BASED ON BASE LINE MEASURED WITH A 100 FEET STEEL TAPE BETWEEN TRIANGULATION STATIONS NOS 29 AND 31 BEARINGS ARE BASED ON OBSERVATION ON POLARIS AT TRIANGULATION STATION NO. 1.

SOUNDINGS ARE EXPRESSED IN FEET AND TENTHS AND REFER TO THE PLANE OF 7.5 ABOVE THE CITY OF PHILADELPHIA DATUM. THEY WERE TAKEN WITH A SOUNDING POLE, AND WERE LOCATED BY INTERSECTIONS WITH TWO TRANSITS.

SHORE LINES, WHARVES, BUILDINGS, ETC WERE LOCATED BY PLANE TABLE THIS SECTION OF THE RIVER IS NOT AFFECTED BY TIDE.

ELEVATIONS AND CONTOURS ARE REFERRED TO CITY OF PHILA. DATUM.

TRIANGULATION STATION'S BENCH MARKS ARE CONCRETE MONUMENTS, SET FLUSH WITH SURFACE, WITH BRASS HEADS 4 IN. DIAM. MARKED UNITED STATES ENGINEER DEPT.

TRIANGULATION STATION NO. 2, ELEV. 15.27, WAS ESTABLISHED BY LEVELS FROM CITY OF PHILA. MONUMENT ON SOUTHERLY SIDE OF RIDGE AVE ABOUT 200 FT. BELOW WISSAHICKON CR WHOSE ELEVATION WAS FURNISHED BY C. A. SUNDSTROM, SURVEYOR EIGHTH DISTRICT, PHILADELPHIA, AS 34.04.

SCHUYLKILL RIVER

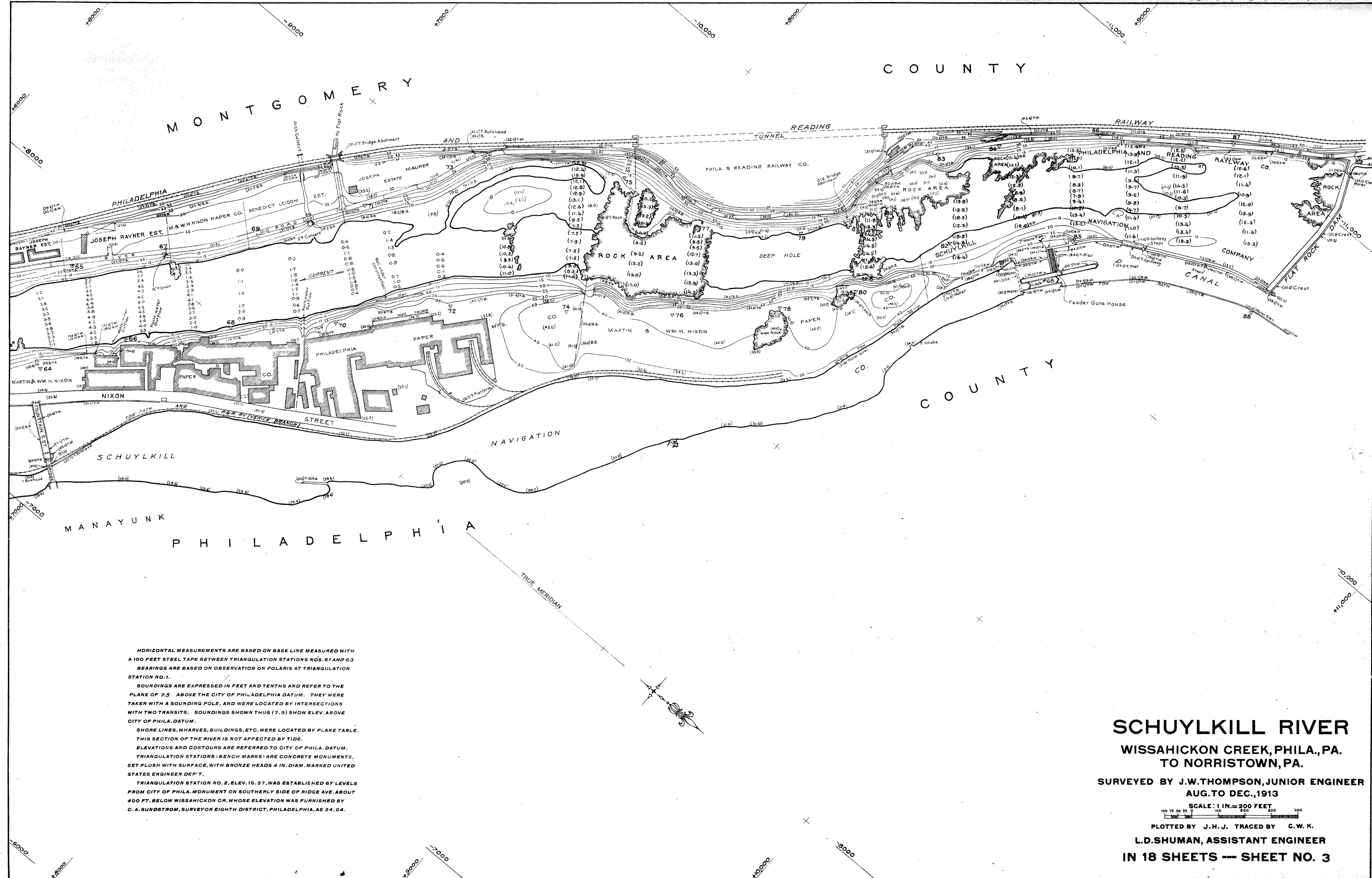
WISSAHICKON CREEK, PHILA., PA.
TO NORRISTOWN, PA.

SURVEYED BY J.W. THOMPSON, JUNIOR ENGINEER
AUG. TO DEC., 1913

SCALE 1 IN. = 200 FEET

PLOTTED BY J.H.J. TRACED BY E.L.M.

L.D. SHUMAN, ASSISTANT ENGINEER
IN 18 SHEETS --- SHEET NO. 2



HORIZONTAL MEASUREMENTS ARE BASED ON BASE LINE MEASURED WITH A 100 FEET STEEL TAPE BETWEEN TRIANGULATION STATIONS NOS. 61 AND 63 BEARINGS ARE BASED ON OBSERVATION ON POLARIS AT TRIANGULATION STATION NO. 1.

SOUNDINGS ARE EXPRESSED IN FEET AND TENTHS AND REFER TO THE PLANE OF 7.5 ABOVE THE CITY OF PHILADELPHIA DATUM. THEY WERE TAKEN WITH A SOUNDING POLE, AND WERE LOCATED BY INTERSECTIONS WITH TWO TRANSITS. SOUNDINGS SHOWN THUS (7.9) SHOW ELEV. ABOVE CITY OF PHILA. DATUM.

SHORE LINES, WHARVES, BUILDINGS, ETC. WERE LOCATED BY PLANE TABLE. THIS SECTION OF THE RIVER IS NOT AFFECTED BY TIDE. ELEVATIONS AND CONTOURS ARE REFERRED TO CITY OF PHILA. DATUM. TRIANGULATION STATIONS (BENCH MARKS) ARE CONCRETE MONUMENTS, SET FLUSH WITH SURFACE, WITH BRONZE HEADS 4 IN. DIAM. MARKED UNITED STATES ENGINEER DEP'T.

TRIANGULATION STATION NO. 2, ELEV. 16.37, WAS ESTABLISHED BY LEVELS FROM CITY OF PHILA. MONUMENT ON SOUTHERLY SIDE OF RIDGE AVE. ABOUT 400 FT. BELOW WISSAHICKON CR. WHOSE ELEVATION WAS FURNISHED BY C.A. SUNDBROM, SURVEYOR EIGHTH DISTRICT, PHILADELPHIA, AS 34.04.

SCHUYLKILL RIVER

WISSAHICKON CREEK, PHILA., PA. TO NORRISTOWN, PA.

SURVEYED BY J.W. THOMPSON, JUNIOR ENGINEER
AUG. TO DEC., 1913

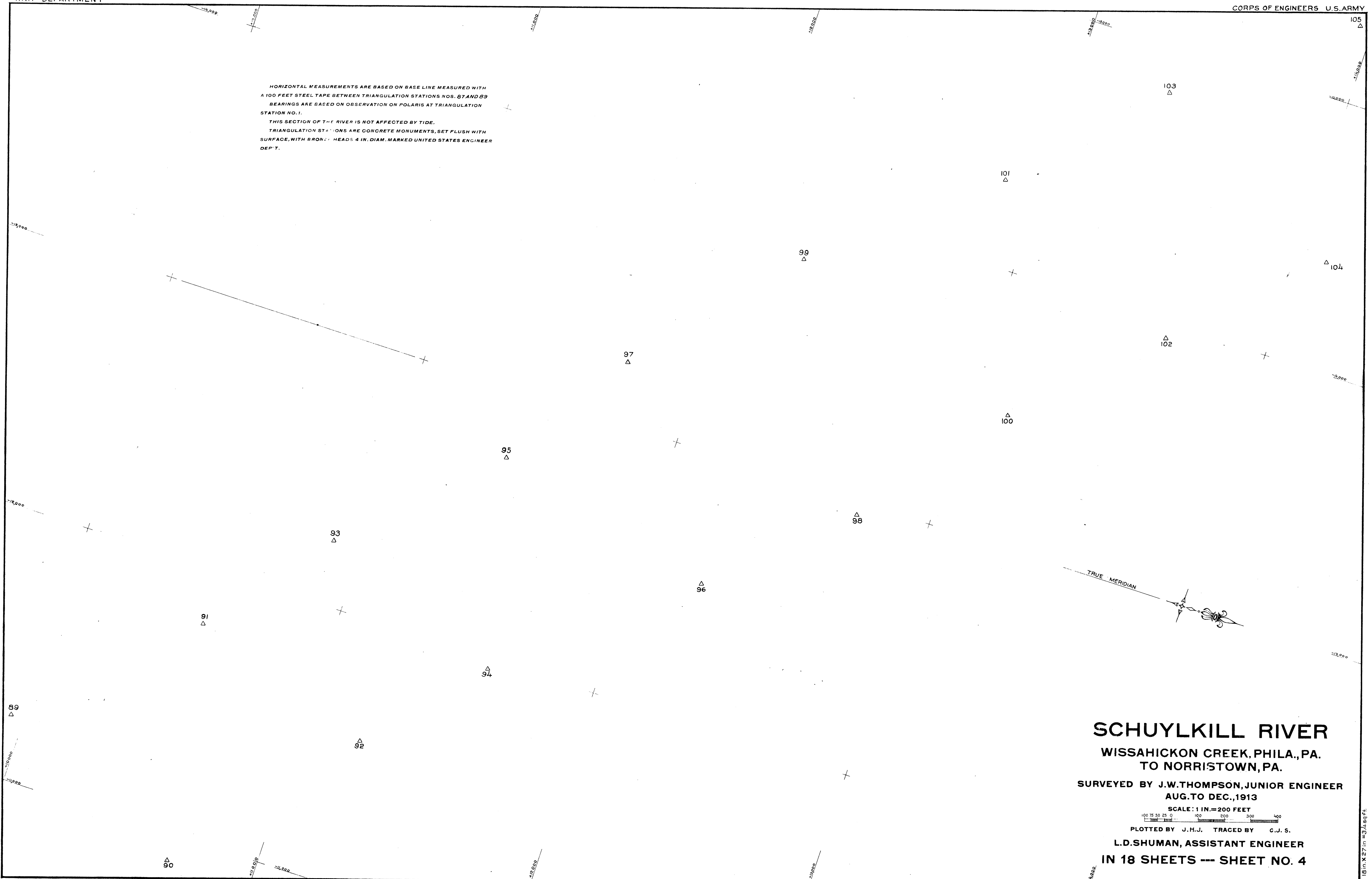
SCALE: 1 IN. = 200 FEET

100 200 300 400 500

PLOTTED BY J.H.J. TRACED BY C.W.K.

L.D. SHUMAN, ASSISTANT ENGINEER
IN 18 SHEETS -- SHEET NO. 3

HORIZONTAL MEASUREMENTS ARE BASED ON BASE LINE MEASURED WITH
 A 100 FEET STEEL TAPE BETWEEN TRIANGULATION STATIONS NOS. 87 AND 89
 BEARINGS ARE BASED ON OBSERVATION ON POLARIS AT TRIANGULATION
 STATION NO. 1.
 THIS SECTION OF THE RIVER IS NOT AFFECTED BY TIDE.
 TRIANGULATION STATIONS ARE CONCRETE MONUMENTS, SET FLUSH WITH
 SURFACE, WITH BRONZE HEADS 4 IN. DIAM. MARKED UNITED STATES ENGINEER
 DEPT.

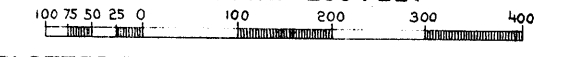


SCHUYLKILL RIVER

WISSAHICKON CREEK, PHILA., PA.
 TO NORRISTOWN, PA.

SURVEYED BY J.W. THOMPSON, JUNIOR ENGINEER
 AUG. TO DEC., 1913

SCALE: 1 IN. = 200 FEET

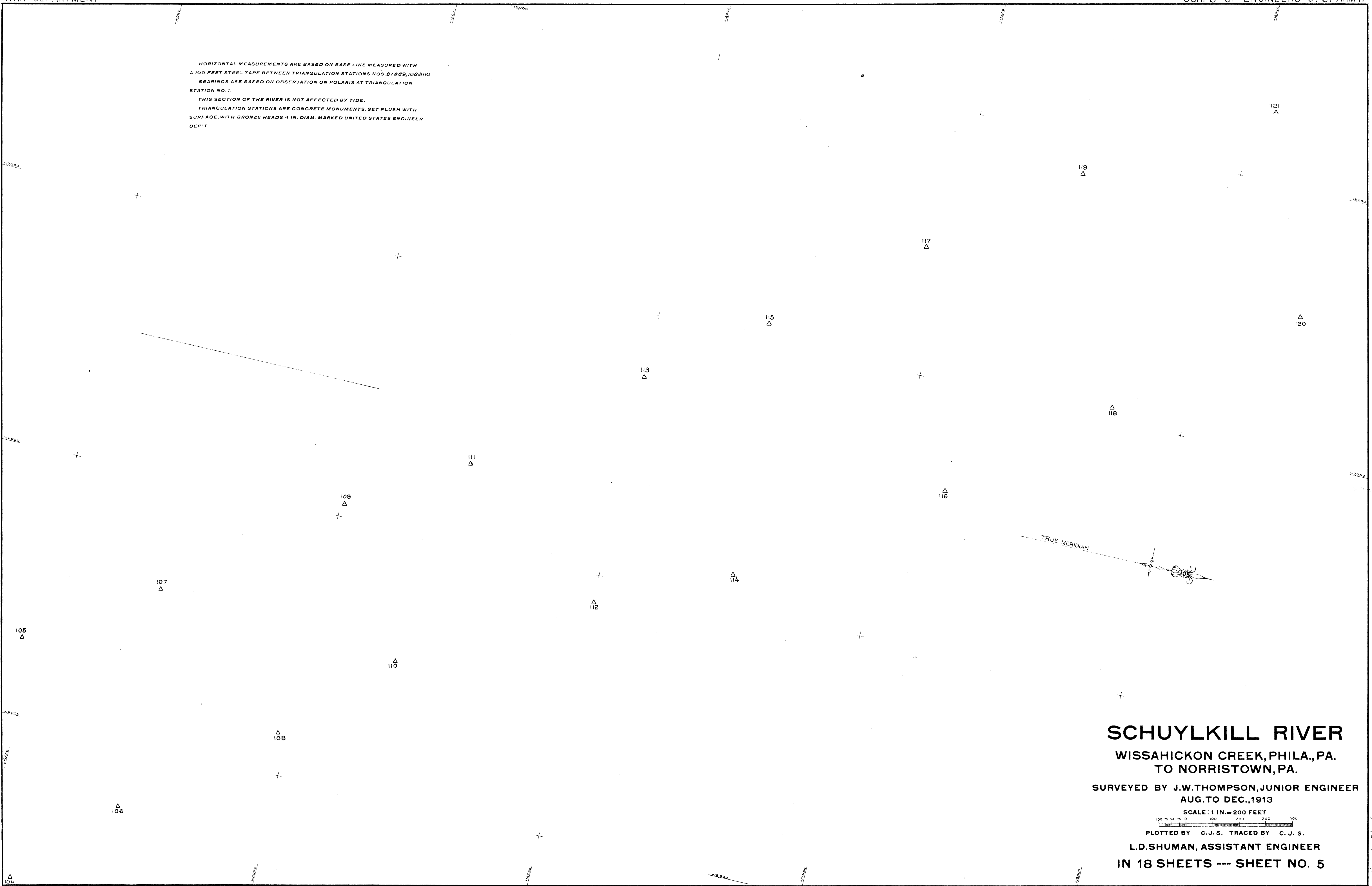


PLOTTED BY J.H.J. TRACED BY C.J. S.

L.D. SHUMAN, ASSISTANT ENGINEER

IN 18 SHEETS --- SHEET NO. 4

HORIZONTAL MEASUREMENTS ARE BASED ON BASE LINE MEASURED WITH
 A 100 FEET STEEL TAPE BETWEEN TRIANGULATION STATIONS NOS. 87, 89, 108 & 110
 BEARINGS ARE BASED ON OBSERVATION ON POLARIS AT TRIANGULATION
 STATION NO. 1.
 THIS SECTION OF THE RIVER IS NOT AFFECTED BY TIDE.
 TRIANGULATION STATIONS ARE CONCRETE MONUMENTS, SET FLUSH WITH
 SURFACE, WITH BRONZE HEADS 4 IN. DIAM. MARKED UNITED STATES ENGINEER
 DEPT.

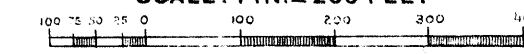


SCHUYLKILL RIVER

WISSAHICKON CREEK, PHILA., PA.
TO NORRISTOWN, PA.

SURVEYED BY J.W. THOMPSON, JUNIOR ENGINEER
AUG. TO DEC., 1913

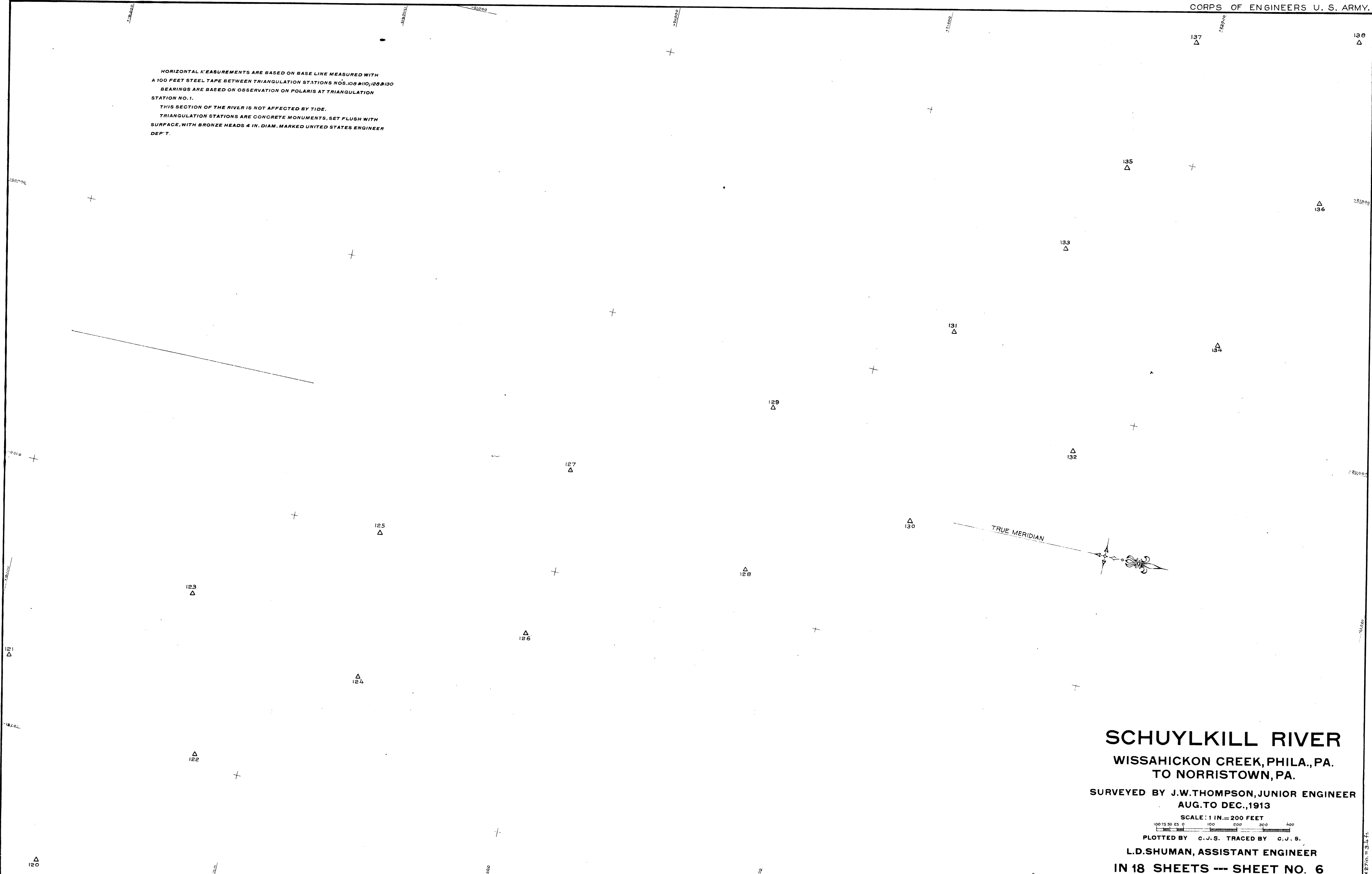
SCALE: 1 IN. = 200 FEET



PLOTTED BY C. J. S. TRACED BY C. J. S.

L.D. SHUMAN, ASSISTANT ENGINEER
IN 18 SHEETS --- SHEET NO. 5

HORIZONTAL MEASUREMENTS ARE BASED ON BASE LINE MEASURED WITH
 A 100 FEET STEEL TAPE BETWEEN TRIANGULATION STATIONS NOS. 108, 110, 128, 130
 BEARINGS ARE BASED ON OBSERVATION ON POLARIS AT TRIANGULATION
 STATION NO. 1.
 THIS SECTION OF THE RIVER IS NOT AFFECTED BY TIDE.
 TRIANGULATION STATIONS ARE CONCRETE MONUMENTS, SET FLUSH WITH
 SURFACE, WITH BRONZE HEADS 4 IN. DIAM. MARKED UNITED STATES ENGINEER
 DEPT.



SCHUYLKILL RIVER

WISSAHICKON CREEK, PHILA., PA.
 TO NORRISTOWN, PA.

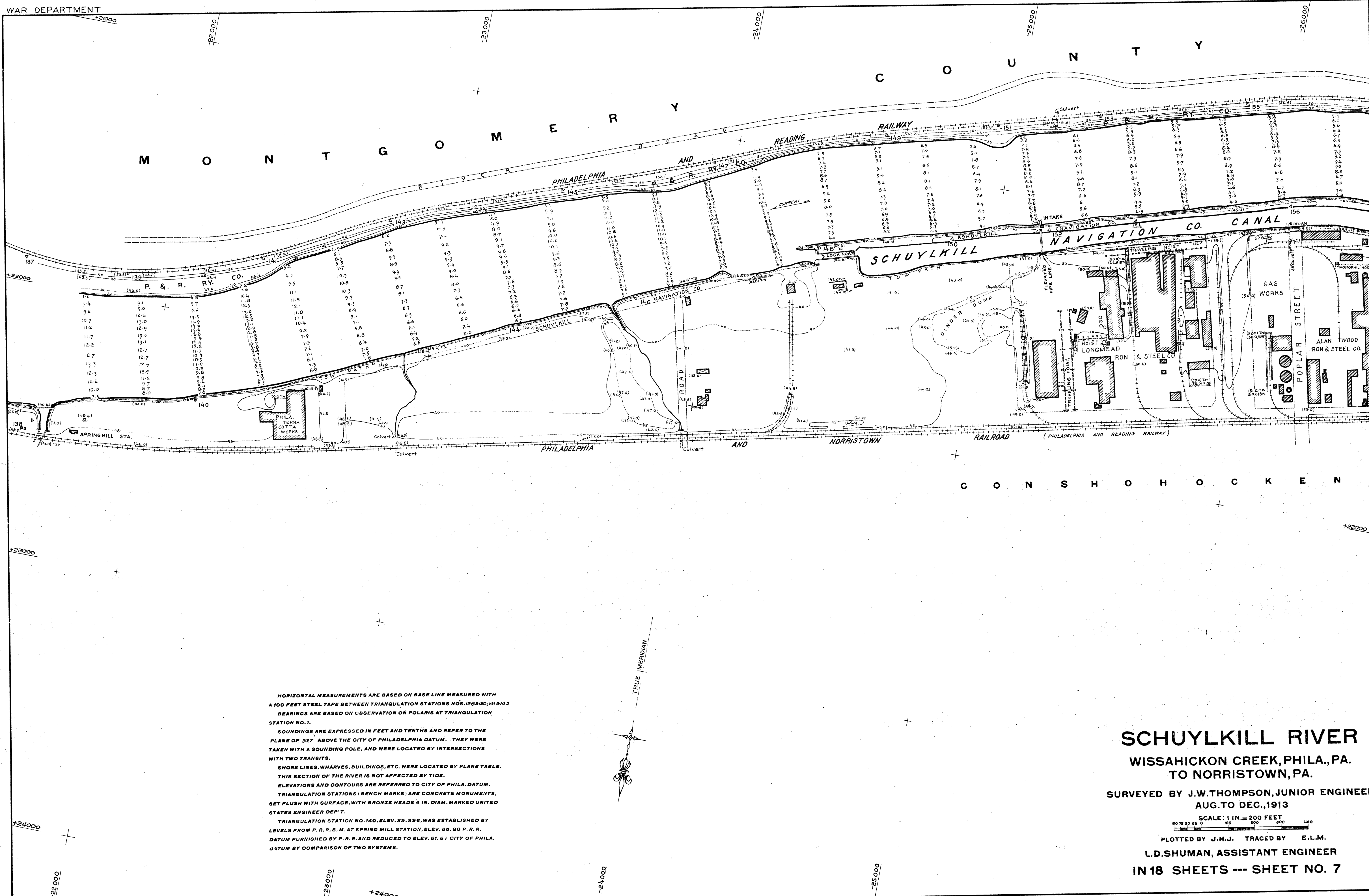
SURVEYED BY J.W. THOMPSON, JUNIOR ENGINEER
 AUG. TO DEC., 1913

SCALE: 1 IN. = 200 FEET

100 75 50 25 0 100 200 300 400

PLOTTED BY C.J.S. TRACED BY C.J.S.

L.D. SHUMAN, ASSISTANT ENGINEER
 IN 18 SHEETS --- SHEET NO. 6



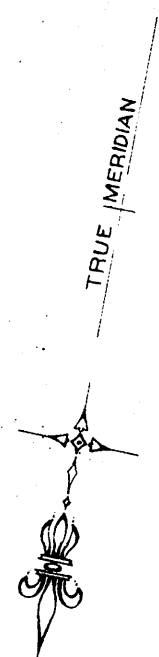
HORIZONTAL MEASUREMENTS ARE BASED ON BASE LINE MEASURED WITH A 100 FEET STEEL TAPE BETWEEN TRIANGULATION STATIONS NOS. 129 & 130; 141 & 143 BEARINGS ARE BASED ON OBSERVATION ON POLARIS AT TRIANGULATION STATION NO. 1.

SOUNDINGS ARE EXPRESSED IN FEET AND TENTHS AND REFER TO THE PLANE OF 33.7' ABOVE THE CITY OF PHILADELPHIA DATUM. THEY WERE TAKEN WITH A SOUNDING POLE, AND WERE LOCATED BY INTERSECTIONS WITH TWO TRANSITS.

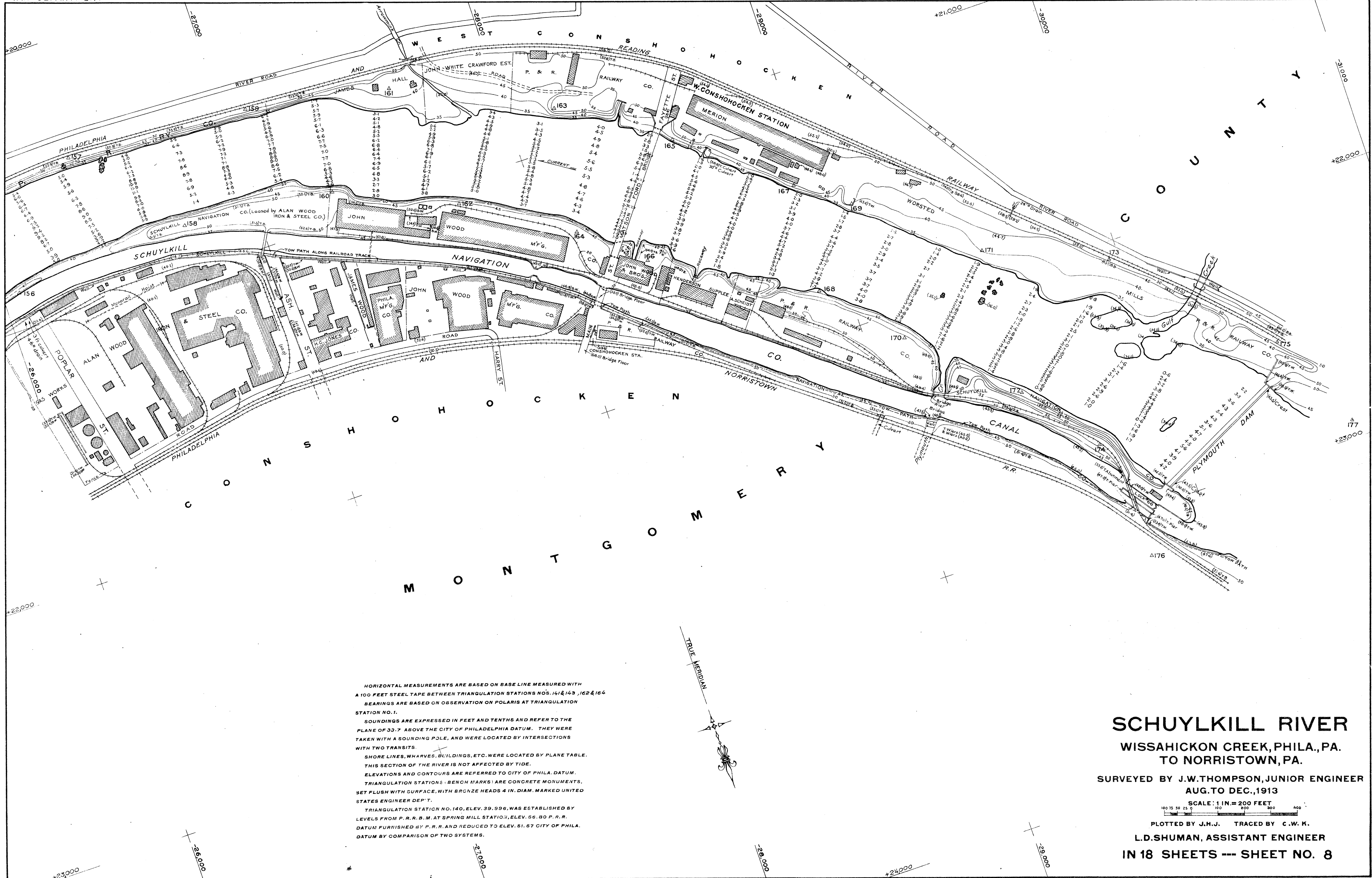
SHORE LINES, WHARVES, BUILDINGS, ETC. WERE LOCATED BY PLANE TABLE. THIS SECTION OF THE RIVER IS NOT AFFECTED BY TIDE.

ELEVATIONS AND CONTOURS ARE REFERRED TO CITY OF PHILA. DATUM. TRIANGULATION STATIONS (BENCH MARKS) ARE CONCRETE MONUMENTS, SET FLUSH WITH SURFACE, WITH BRONZE HEADS 4 IN. DIAM. MARKED UNITED STATES ENGINEER DEP'T.

TRIANGULATION STATION NO. 140, ELEV. 39.996, WAS ESTABLISHED BY LEVELS FROM P. R. R. B. M. AT SPRING MILL STATION, ELEV. 56.80 P. R. R. DATUM FURNISHED BY P. R. R. AND REDUCED TO ELEV. 51.67 CITY OF PHILA. DATUM BY COMPARISON OF TWO SYSTEMS.



SCHUYLKILL RIVER
 WISSAHICKON CREEK, PHILA., PA.
 TO NORRISTOWN, PA.
 SURVEYED BY J.W. THOMPSON, JUNIOR ENGINEER
 AUG. TO DEC., 1913
 SCALE: 1 IN. = 200 FEET
 PLOTTED BY J.H.J. TRACED BY E.L.M.
 L.D. SHUMAN, ASSISTANT ENGINEER
 IN 18 SHEETS --- SHEET NO. 7



HORIZONTAL MEASUREMENTS ARE BASED ON BASE LINE MEASURED WITH A 100 FEET STEEL TAPE BETWEEN TRIANGULATION STATIONS NOS. 141 & 143, 162 & 164. BEARINGS ARE BASED ON OBSERVATION ON POLARIS AT TRIANGULATION STATION NO. 1.

SOUNDINGS ARE EXPRESSED IN FEET AND TENTHS AND REFER TO THE PLANE OF 33.7 ABOVE THE CITY OF PHILADELPHIA DATUM. THEY WERE TAKEN WITH A SOUNDING POLE, AND WERE LOCATED BY INTERSECTIONS WITH TWO TRANSITS.

SHORE LINES, WHARVES, BUILDINGS, ETC. WERE LOCATED BY PLANE TABLE. THIS SECTION OF THE RIVER IS NOT AFFECTED BY TIDE.

ELEVATIONS AND CONTOURS ARE REFERRED TO CITY OF PHILA. DATUM. TRIANGULATION STATIONS (BENCH MARKS) ARE CONCRETE MONUMENTS, SET FLUSH WITH SURFACE, WITH BRONZE HEADS 4 IN. DIAM. MARKED UNITED STATES ENGINEER DEP'T.

TRIANGULATION STATION NO. 140, ELEV. 39.996, WAS ESTABLISHED BY LEVELS FROM P. R. R. B. M. AT SPRING MILL STATION, ELEV. 56.80 P. R. R. DATUM FURNISHED BY P. R. R. AND REDUCED TO ELEV. 61.67 CITY OF PHILA. DATUM BY COMPARISON OF TWO SYSTEMS.

SCHUYLKILL RIVER
 WISSAHICKON CREEK, PHILA., PA.
 TO NORRISTOWN, PA.

SURVEYED BY J.W. THOMPSON, JUNIOR ENGINEER
 AUG. TO DEC., 1913

SCALE: 1 IN. = 200 FEET

PLOTTED BY J.H.J. TRACED BY C.W.K.

L.D. SHUMAN, ASSISTANT ENGINEER
 IN 18 SHEETS --- SHEET NO. 8

Vertical curve data for the Schuylkill River
A vertical curve was established at the location of the
bridge over the river at the intersection of the
road and the river. The data for this curve is as
follows:
Length of curve = 100 feet
Grade before curve = +2.00%
Grade after curve = -1.00%
Elevation of PVI = 100.00 feet
Elevation of BVC = 98.00 feet
Elevation of EVC = 102.00 feet

19
Δ

159
Δ

87
Δ

Δ
192

Δ
193

193
Δ

Δ
163

Δ
164

191
Δ

Δ
167

179
Δ

175
Δ

Δ
190



TRUE MERIDIAN

173
Δ

Δ
178

SCHUYLKILL RIVER

WISSAHICKON CREEK, PHILA., PA.
TO NORRISTOWN, PA.

SURVEYED BY J.W. THOMPSON, JUNIOR ENGINEER
AUG. TO DEC., 1913

SCALE: 1 IN. = 200 FEET

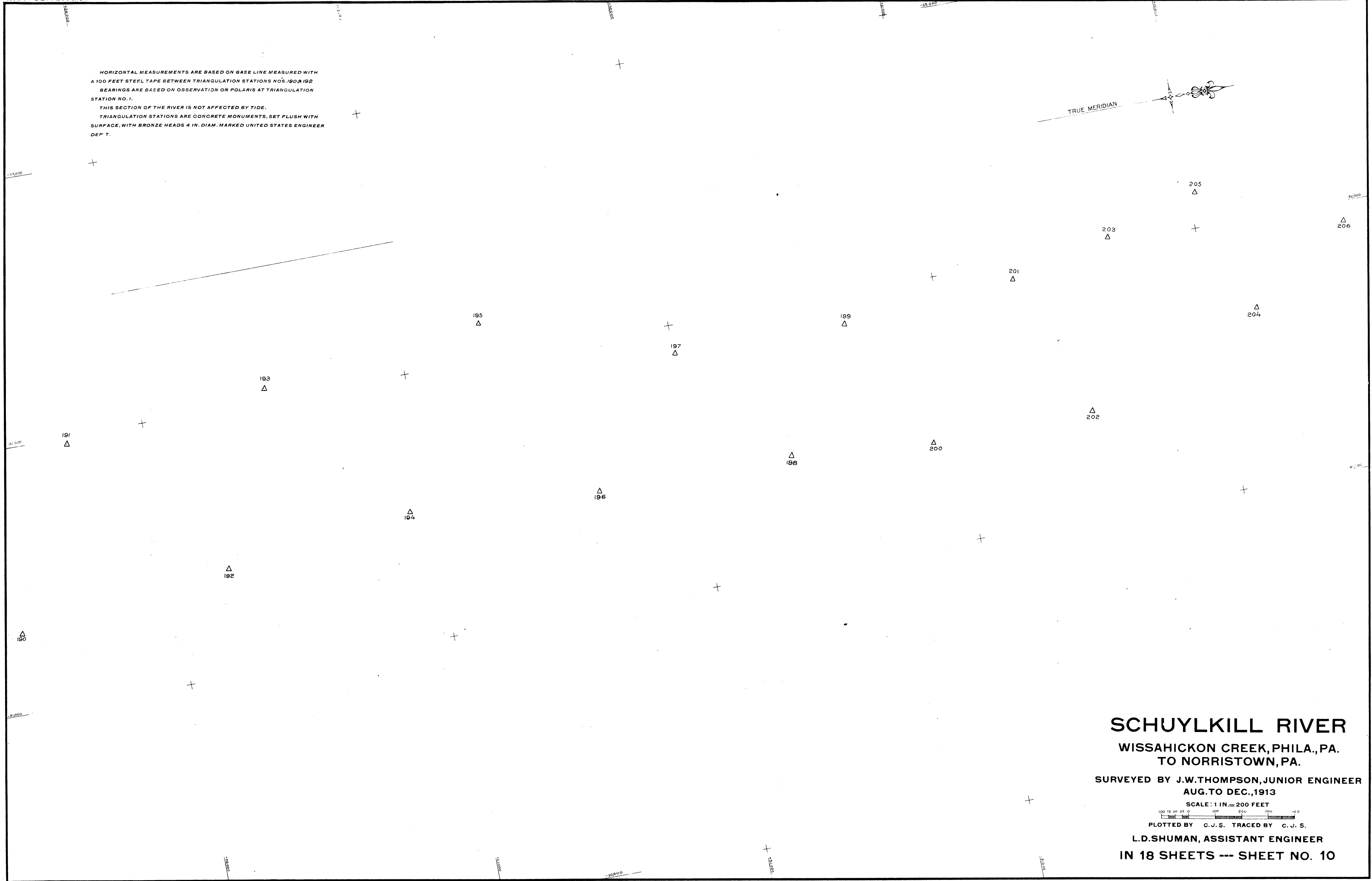
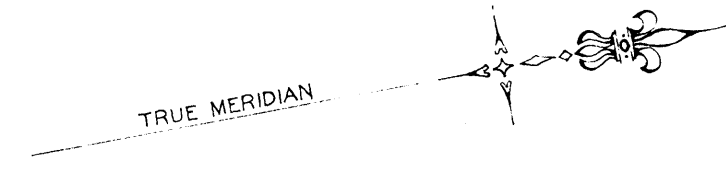
PLOTTED BY C.J.S. TRACED BY C.J.S.

L.D. SHUMAN, ASSISTANT ENGINEER
IN 18 SHEETS --- SHEET NO. 9

Δ
186


Δ
177

HORIZONTAL MEASUREMENTS ARE BASED ON BASE LINE MEASURED WITH
 A 100 FEET STEEL TAPE BETWEEN TRIANGULATION STATIONS NOS. 190 & 192
 BEARINGS ARE BASED ON OBSERVATION ON POLARIS AT TRIANGULATION
 STATION NO. 1.
 THIS SECTION OF THE RIVER IS NOT AFFECTED BY TIDE.
 TRIANGULATION STATIONS ARE CONCRETE MONUMENTS, SET FLUSH WITH
 SURFACE, WITH BRONZE HEADS 4 IN. DIAM. MARKED UNITED STATES ENGINEER
 DEP'T.

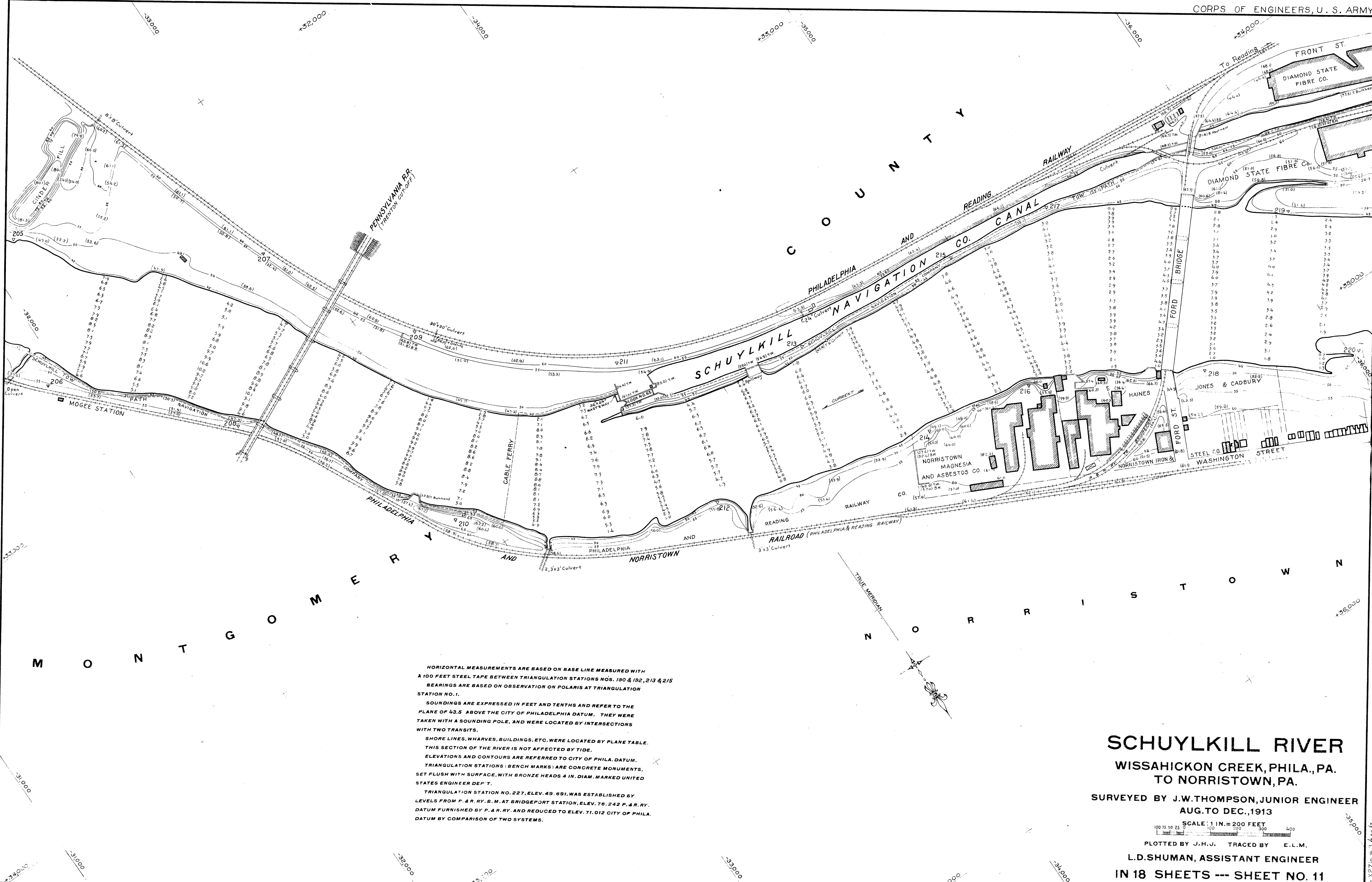


SCHUYLKILL RIVER
WISSAHICKON CREEK, PHILA., PA.
TO NORRISTOWN, PA.

SURVEYED BY J.W. THOMPSON, JUNIOR ENGINEER
 AUG. TO DEC., 1913

SCALE: 1 IN. = 200 FEET

 PLOTTED BY C.J.S. TRACED BY C.J.S.

L.D. SHUMAN, ASSISTANT ENGINEER
 IN 18 SHEETS --- SHEET NO. 10



HORIZONTAL MEASUREMENTS ARE BASED ON BASE LINE MEASURED WITH A 100 FEET STEEL TAPE BETWEEN TRIANGULATION STATIONS NOS. 190 & 192, 213 & 215 BEARINGS ARE BASED ON OBSERVATION ON POLARIS AT TRIANGULATION STATION NO. 1.

SOUNDINGS ARE EXPRESSED IN FEET AND TENTHS AND REFER TO THE PLANE OF 43.5 ABOVE THE CITY OF PHILADELPHIA DATUM. THEY WERE TAKEN WITH A SOUNDING POLE, AND WERE LOCATED BY INTERSECTIONS WITH TWO TRANSITS.

SHORE LINES, WHARVES, BUILDINGS, ETC. WERE LOCATED BY PLANE TABLE. THIS SECTION OF THE RIVER IS NOT AFFECTED BY TIDE.

ELEVATIONS AND CONTOURS ARE REFERRED TO CITY OF PHILA. DATUM. TRIANGULATION STATIONS (BENCH MARKS) ARE CONCRETE MONUMENTS, SET FLUSH WITH SURFACE, WITH BRONZE HEADS 4 IN. DIAM. MARKED UNITED STATES ENGINEER DEP'T.

TRIANGULATION STATION NO. 227, ELEV. 49.691, WAS ESTABLISHED BY LEVELS FROM P. & R. RY. B.M. AT BRIDGEPORT STATION, ELEV. 76.242 P. & R. RY. DATUM FURNISHED BY P. & R. RY. AND REDUCED TO ELEV. 71.012 CITY OF PHILA. DATUM BY COMPARISON OF TWO SYSTEMS.

SCHUYLKILL RIVER

WISSAHICKON CREEK, PHILA., PA.
TO NORRISTOWN, PA.

SURVEYED BY J.W. THOMPSON, JUNIOR ENGINEER
AUG. TO DEC., 1913

SCALE: 1 IN. = 200 FEET

100 75 50 25 0 25 50 100 200 300 400

PLOTTED BY J.H.J. TRACED BY E.L.M.

L.D. SHUMAN, ASSISTANT ENGINEER
IN 18 SHEETS --- SHEET NO. 11

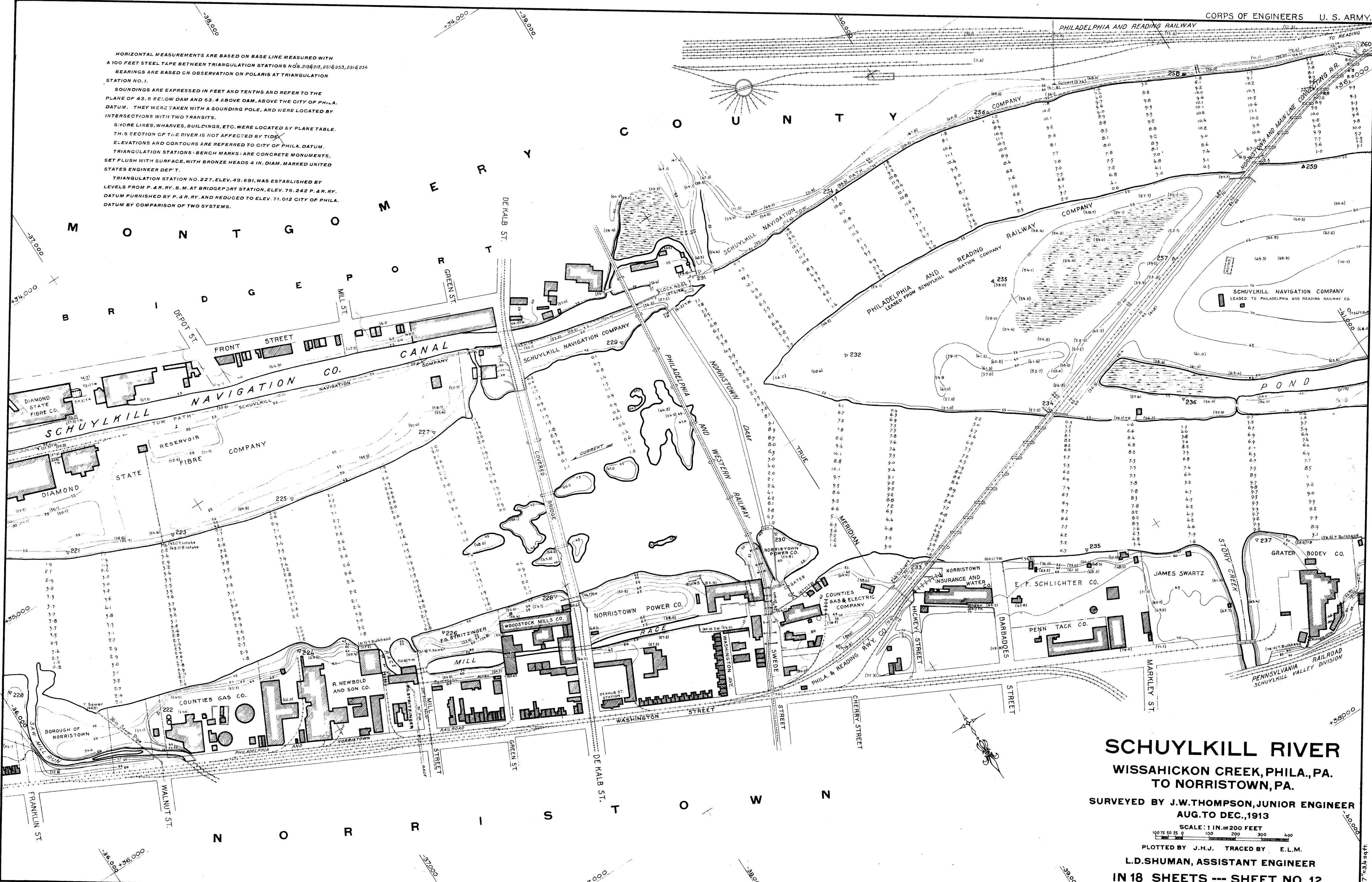
HORIZONTAL MEASUREMENTS ARE BASED ON BASE LINE MEASURED WITH A 100 FEET STEEL TAPE BETWEEN TRIANGULATION STATIONS NOS. 213 & 215, 251 & 253, 231 & 254 BEARINGS ARE BASED ON OBSERVATION ON POLARIS AT TRIANGULATION STATION NO. 1.

SOUNDINGS ARE EXPRESSED IN FEET AND TENTHS AND REFER TO THE PLANE OF 43.5 BELOW DAM AND 53.4 ABOVE DAM, ABOVE THE CITY OF PHILA. DATUM. THEY WERE TAKEN WITH A SOUNDING POLE, AND WERE LOCATED BY INTERSECTIONS WITH TWO TRANSITS.

SHORE LINES, WHARVES, BUILDINGS, ETC. WERE LOCATED BY PLANE TABLE. THIS SECTION OF THE RIVER IS NOT AFFECTED BY TIDE.

ELEVATIONS AND CONTOURS ARE REFERRED TO CITY OF PHILA. DATUM. TRIANGULATION STATIONS (BENCH MARKS) ARE CONCRETE MONUMENTS, SET FLUSH WITH SURFACE, WITH BRONZE HEADS 4 IN. DIAM. MARKED UNITED STATES ENGINEER DEPT.

TRIANGULATION STATION NO. 227, ELEV. 49.691, WAS ESTABLISHED BY LEVELS FROM P. & R. RY. B. M. AT BRIDGEPORT STATION, ELEV. 76.242 P. & R. RY. DATUM FURNISHED BY P. & R. RY. AND REDUCED TO ELEV. 71.012 CITY OF PHILA. DATUM BY COMPARISON OF TWO SYSTEMS.



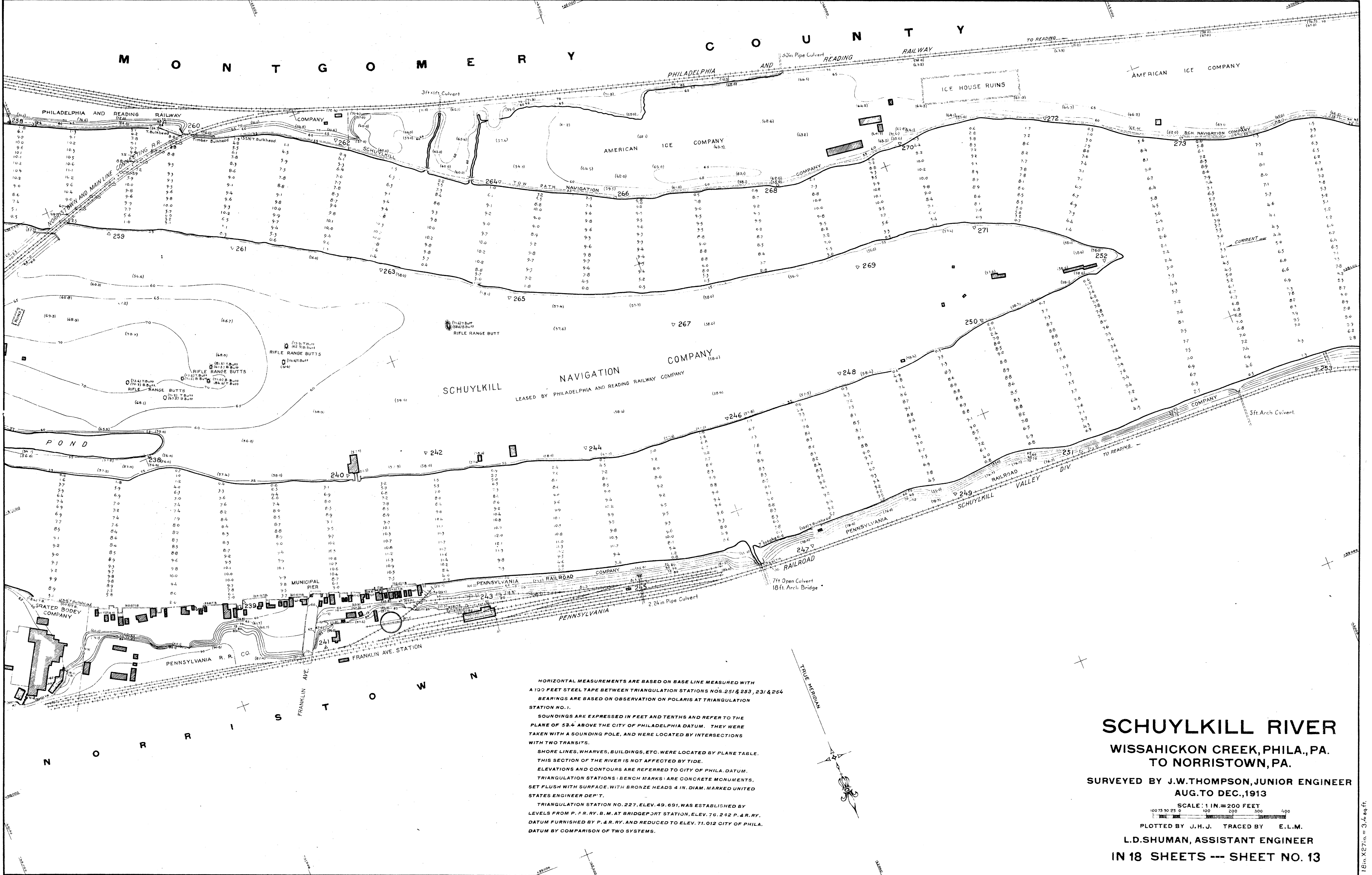
SCHUYLKILL RIVER
WISSAHICKON CREEK, PHILA., PA.
TO NORRISTOWN, PA.

SURVEYED BY J.W. THOMPSON, JUNIOR ENGINEER
 AUG. TO DEC., 1913

SCALE: 1 IN. = 200 FEET

PLOTTED BY J.H.J. TRACED BY E.L.M.

L.D. SHUMAN, ASSISTANT ENGINEER
 IN 18 SHEETS --- SHEET NO. 12



HORIZONTAL MEASUREMENTS ARE BASED ON BASE LINE MEASURED WITH A 100 FEET STEEL TAPE BETWEEN TRIANGULATION STATIONS NOS. 251 & 253, 231 & 254 BEARINGS ARE BASED ON OBSERVATION ON POLARIS AT TRIANGULATION STATION NO. 1.

SOUNDINGS ARE EXPRESSED IN FEET AND TENTHS AND REFER TO THE PLANE OF 53.4 ABOVE THE CITY OF PHILADELPHIA DATUM. THEY WERE TAKEN WITH A SOUNDING POLE, AND WERE LOCATED BY INTERSECTIONS WITH TWO TRANSITS.

SHORE LINES, WHARVES, BUILDINGS, ETC. WERE LOCATED BY PLANE TABLE. THIS SECTION OF THE RIVER IS NOT AFFECTED BY TIDE.

ELEVATIONS AND CONTOURS ARE REFERRED TO CITY OF PHILA. DATUM. TRIANGULATION STATIONS (BENCH MARKS) ARE CONCRETE MONUMENTS, SET FLUSH WITH SURFACE, WITH BRONZE HEADS 4 IN. DIAM. MARKED UNITED STATES ENGINEER DEP'T.

TRIANGULATION STATION NO. 227, ELEV. 49.691, WAS ESTABLISHED BY LEVELS FROM P. & R. R. B. M. AT BRIDGEPORT STATION, ELEV. 76.242 P. & R. R. DATUM FURNISHED BY P. & R. RY. AND REDUCED TO ELEV. 71.012 CITY OF PHILA. DATUM BY COMPARISON OF TWO SYSTEMS.

SCHUYLKILL RIVER

WISSAHICKON CREEK, PHILA., PA.
TO NORRISTOWN, PA.

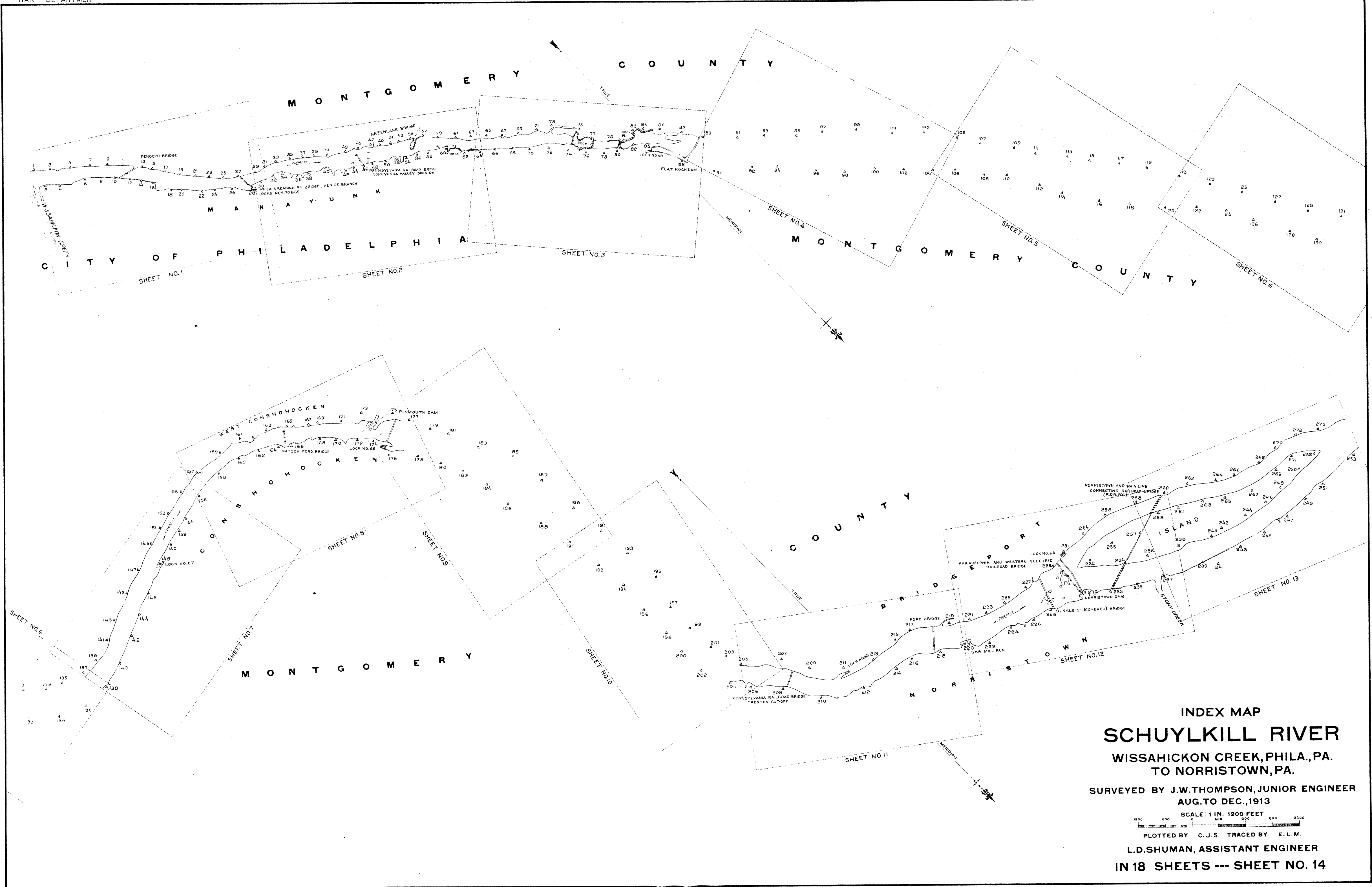
SURVEYED BY J.W. THOMPSON, JUNIOR ENGINEER
AUG. TO DEC., 1913

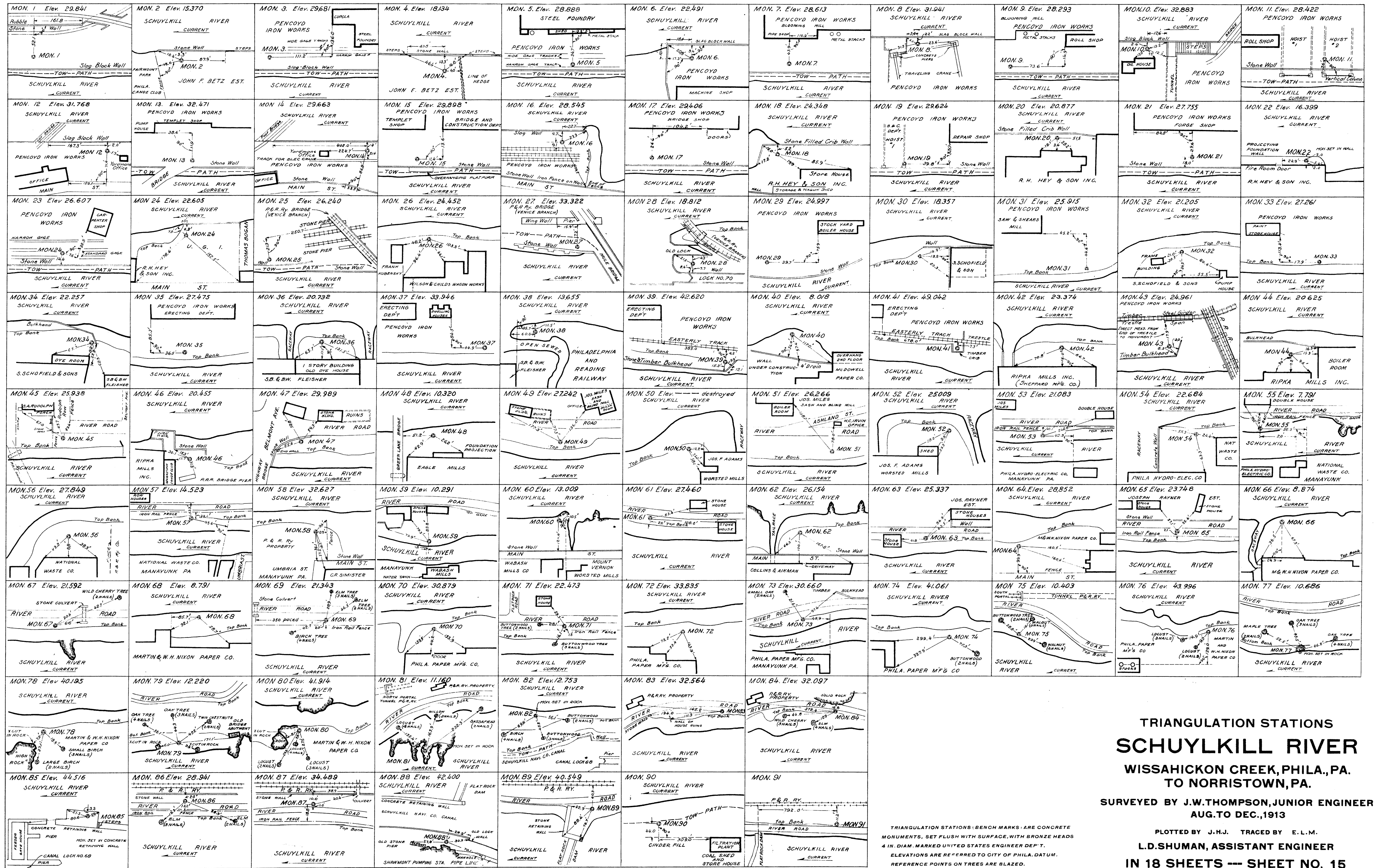
SCALE: 1 IN. = 200 FEET

100 150 200 250 300 400

PLOTTED BY J.H.U. TRACED BY E.L.M.

L.D. SHUMAN, ASSISTANT ENGINEER
IN 18 SHEETS --- SHEET NO. 13





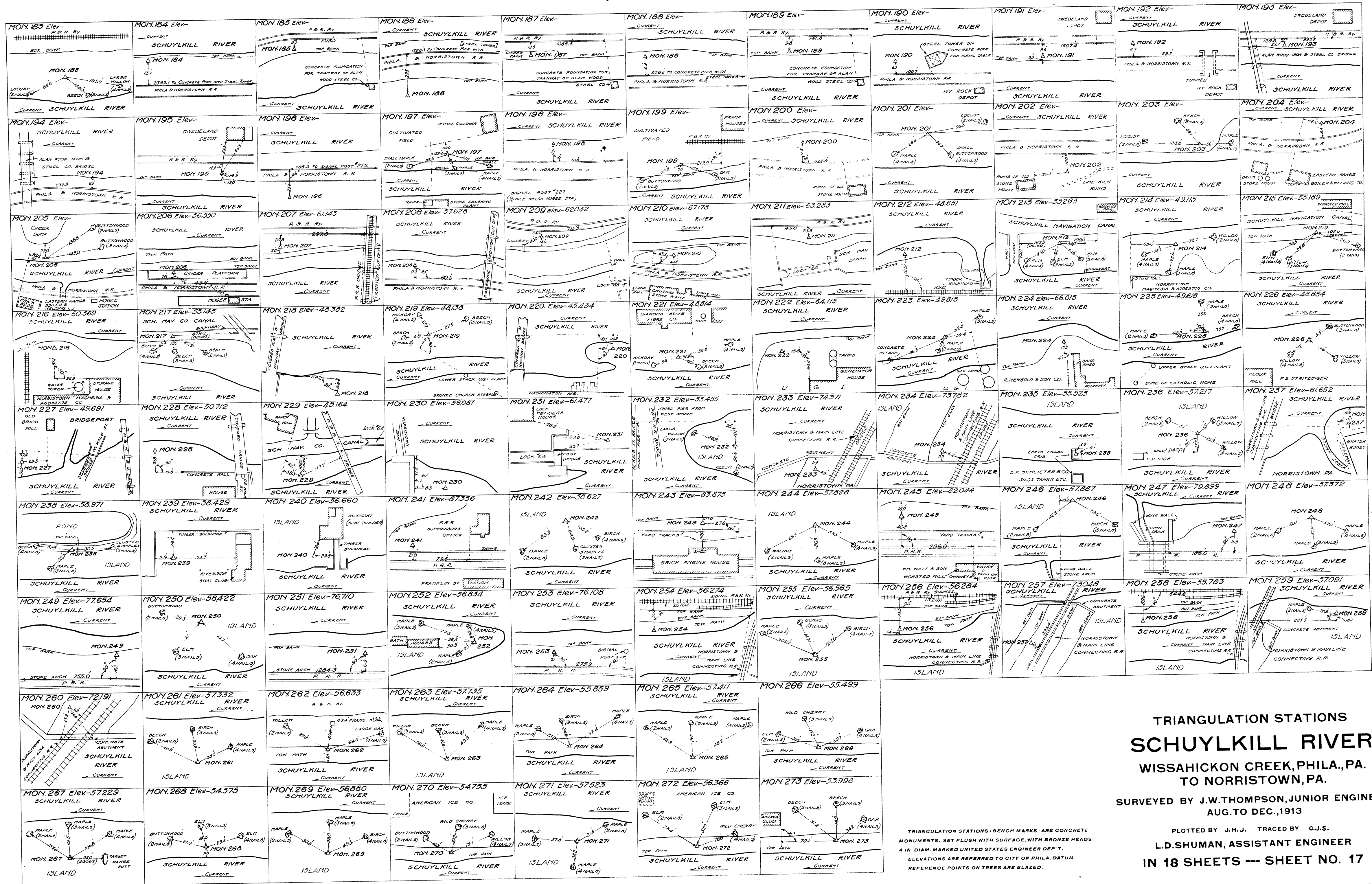
TRIANGULATION STATIONS
SCHUYLKILL RIVER
 WISSAHICKON CREEK, PHILA., PA.
 TO NORRISTOWN, PA.

SURVEYED BY J.W. THOMPSON, JUNIOR ENGINEER
 AUG. TO DEC., 1913

PLOTTED BY J.H.J. TRACED BY E.L.M.
 L.D. SHUMAN, ASSISTANT ENGINEER

IN 18 SHEETS -- SHEET NO. 15

TRIANGULATION STATIONS (BENCH MARKS) ARE CONCRETE MONUMENTS, SET FLUSH WITH SURFACE, WITH BRONZE HEADS 4 IN. DIAM. MARKED UNITED STATES ENGINEER DEPT. ELEVATIONS ARE REFERRED TO CITY OF PHILA. DATUM. REFERENCE POINTS ON TREES ARE BLAZED.



TRIANGULATION STATIONS
SCHUYLKILL RIVER
 WISSAHICKON CREEK, PHILA., PA.
 TO NORRISTOWN, PA.

SURVEYED BY J.W. THOMPSON, JUNIOR ENGINEER
 AUG. TO DEC., 1913

PLOTTED BY J.H.J. TRACED BY G.J.S.
 L.D. SHUMAN, ASSISTANT ENGINEER

IN 18 SHEETS --- SHEET NO. 17

TRIANGULATION STATIONS | BENCH MARKS | ARE CONCRETE
 MONUMENTS, SET FLUSH WITH SURFACE, WITH BRONZE HEADS
 4 IN. DIAM. MARKED UNITED STATES ENGINEER DEPT.
 ELEVATIONS ARE REFERRED TO CITY OF PHILA. DATUM.
 REFERENCE POINTS ON TREES ARE BLAZED.

